

How to map the Disc Station (DS) from ZEISS880 microscope

You can store your data directly to your IEB P: drive or to Imaging facility DS I: drive

How to map disc station

- Log in to Windows
- Select **Computer** from the Start menu
- Select **Map network drive**
- Name the drive as **I:**
- Select from history or type:
<\\ds-ueb-if.asuch.cas.cz\home> (to connect imaging facility disc station)
- **OR**
<\\ds.asuch.cas.cz\home> (to connect your IEB P: drive with 100 GB capacity)
- check checkbox → connect using different credentials
- Press **Finish** button
- log in as ASUCH user (your name and pswd)
- (or as an external user (user name: **ds-ueb-if** your name and pswd))

The Disc Station will be available as your new drive (I:) on microscope PC, you can save your data directly there.

Before leaving disconnect the I: drive by right-mouse button on I: drive and select Disconnect

How to reach your data at work

- in ASUCH domain, map the Imaging Facility Disc Station on your PC analogically as above

How to reach your data from home

- connect by VPN to ASUCH domain and map Imaging facility disc station

or from Windows computer out of ASUCH domain:

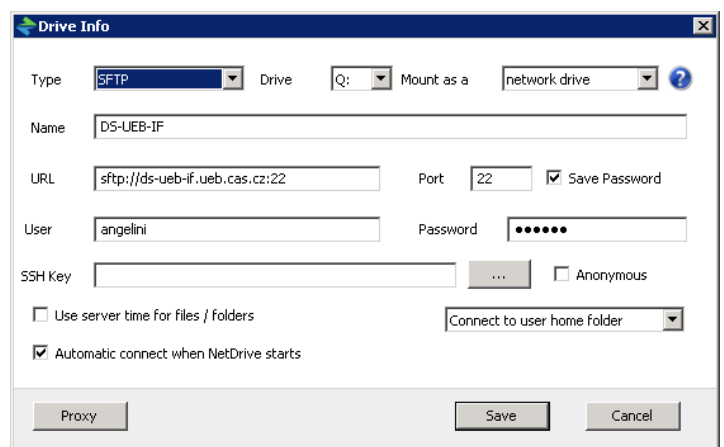
- type web address <http://ds-ueb-if.ueb.cas.cz>
- log in
- choose left top icon
- in File Station work with your files

OR install Netdrive2

(www.netdrive.net), configure as follows and connect imaging facility disc station as new drive

From Mac:

- map disc using Finder, select on top **Go -> Connect to Server**. Fill in path `afp://ds-ueb-if.asuch.cas.cz/home` and log in as in ASUCH domain.



Enjoy! Help Katka I. 435